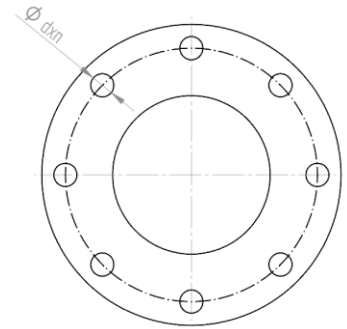
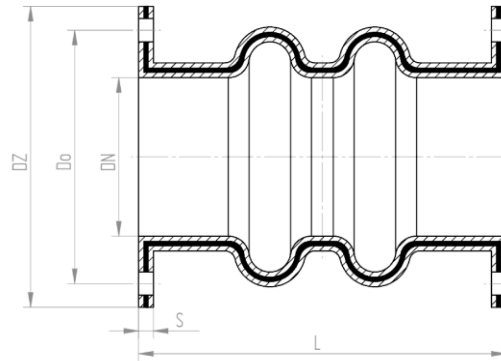


Rubber inserts of pinch valves – Two arched DN80-DN500

METAL-GUM Zielona Góra ul. Naftowa 2, tel. (68) 458-55-60, bok@metal-gum.com.pl



Technical datas:

- range diameters: DN80-DN500
- working pressure: 0,6/1,0/1,6 MPa
- working temperature: max. 100°C
temperature depends on kind of rubber and working pressure
- Flange openings : PN06/PN10/PN16

Construction:

- Inner lining: NR, EPDM, EPDM-HT, SBR, NBR
- Reinforced with a syntetic cord

Advantages::

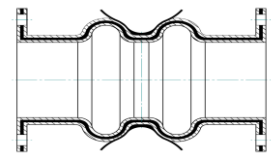
- durability and reliability of using
- certified rubber compounds
- Compliance with the pressure directive 2014/68 / EU makes that the fittings are safe in use.

Dimension Table

DN	L (mm)	Flange openings PN	Max Working pressure (MPa)	Dz	Do	s	d	n
80	200	10/16	1,6	200	160	12	18	8
100	300	25	1,6	235	190	14	22	8
125	310	10/16	1,6	250	210	14	18	8
125	310	10/16	1,6	270	210	14	18	8
125	310	25	1,6	270	220	14	26	8
150	350	10/16	1,6	285	240	14	22	8
150	350	25	1,6	300	250	14	26	8
300	500	PN10	1,0	445	400	17	22	12
350	740	PN10	1,0	510	460	21	22	16
400	890	PN10	1,0	570	515	21	26	16
500	1250	PN10	1,0	675	620	21	26	20

Parameters beyond those indicated above e.g. increased range of working pressure or other diameters - on individual customer's request

Every rubber insert can have opening tags



We also produce :