



Description:

Conical expansion joints are used to connect two pipelines or a pump with a pipeline with two different nominal diameters. The materials used to build expansion joints allow their use at high pressures in highly abrasive media. These compensators are made of an inner layer of rubber resistant to the medium and an outer layer protecting the compensator against the effects of weather conditions. Between the inner and outer layers of rubber, depending on pressure, there are from several to several layers of synthetic cord laid at the right angle to each layer. Special designs also have a steel wire cord braid.

CERTIFICATES



Motion compensation



Axial (elongines)
(+ ◀▶)



Axial (compression)
(- ▶◀)



Angular
(± α°)



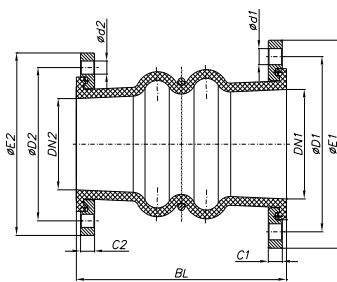
Radial
(± ▲▼)

Technical Datas:

- range of diameters: DN50-DN1200
- working temperature:
0,6 MPa, 1,0 MPa, 16 MPa
- flange openings:
PN10, PN16

Construction:

- bellow:
 - EPDM, HTEPDM, NBR, SBR, CR, NR another kinds of rubber available as well. (Hypalon, Viton, Butyl)
- flange:
 - Steel coated with anti - corrosion layer:
Zn (hot dip galvanization) or epoxy paints.
 - Acid resistasnt steel, 1.4301, 1.4401, 1.4404, 1.4571, or others according to requirements



BL – bellow lenght
 ØE1 – external flange diameter
 ØE2 – external flange diameter
 ØD1 – pitch diameter of openings in flange
 ØD2 – pitch diameter of openings in flange
 Ød1/Ød2 – screw holes diameter
 C1/C2 – flange thickness

Dimension Table

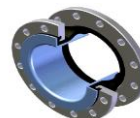
Lp.	DN1	DN2	BL	C1	C2	ØD1	ØD2	ØE1	ØE2	Ød1	Ød2
1	40	32	250	16	16	110	100	150	140	4x18	4x18
2	50	40	250	16	16	125	110	165	150	4x18	4x18
3	65	50	250	16	16	145	125	185	165	8x18	4x18
4	80	50	250	18	16	160	125	200	165	8x18	4x18
5	100	80	250	18	18	180	160	220	200	8x18	8x18
6	125	80	250	18	18	210	160	250	200	8x18	8x18
7	125	100	250	18	18	210	180	250	220	8x18	8x18
8	150	80	250	20	18	240	160	285	200	8x22	8x18
9	150	100	250	20	18	240	180	285	220	8x22	8x18
10	150	125	250	20	18	240	210	285	250	8x22	8x18

* the above diameters and building lengths are standard. You can place an order with individual values

Auxiliary equipment:



Anti - fouling cover



Deflector



Vacuum bellow