



**Description:**

Rubber bends are designed for transporting dirty or heavily abrasive media, thanks to their flexible construction they are easier to fit in tight places, or reduce axial displacements between flanges. Knees are also produced with rubber flanges.

**CERTIFICATES**



**Coupling for installing Elbows and Rubber Hoses**



A coupling used for tightly connection a rubber elbow with others installation parts, e.g. rubber hoses. Couplings can be made in acid resistant version, with zinc coating or powder paint.

**Technical data:**

- diameter range 44-710 mm
- nominal pressure: 0.6-1.0MPa
- max. working temperature 110°C
- possibility of mounting to the pipe connector

**Construction:**

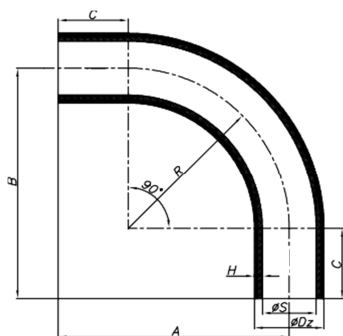
- inner layer: wear-resistant rubber,
- reinforcement: nylon cord, steel wire,
- outer layer: EPDM, NBR, NR.



**Dimensions Tabele**

Catalogue number	Inner diameter (mm)	Pressure (MPa)	A (mm)	B (mm)	C (mm)	R (mm)	Dz (mm)	H (mm)
*110.01	44	1,0	220	220	85	135	64	10
*110.02	51	1,0	260	260	105	155	71	10
*110.03	63	1,0	285	285	105	180	83	10
*110.04	76	1,0	335	335	105	230	96	10
*110.05	90	1,0	400	400	130	270	110	10
110.06	102	1,0	438	438	133	305	134	16
*110.07	116	1,0	510	510	160	350	148	16
110.08	127	1,0	570	570	190	380	159	16
*110.09	140	1,0	610	610	190	420	162	16
110.10	152	1,0	650	650	195	455	184	16
110.11	204	1,0	890	890	275	615	232	14
110.12	254	1,0	980	980	195	765	288	17
110.13	305	1,0	1170	1170	255	915	338	16,5
110.14	356	1,0	1225	1225	275	950	396	20
110.15	406	1,0	1300	1300	325	975	450	22
110.16	508	1,0	1350	1350	375	975	552	22
110.17	605	1,0	1700	1700	450	1250	660	27,5
110.18	710	1,0	1700	1700	450	1250	786	38

\* Rubber elbows on inquiry



**Other devices from the METAL-GUM production program:**



Rubber expansion joints



Teflon rubber expansion joints



Conical expansion joints